



IMPERIAL
HEALTH PLAN
OF CALIFORNIA

2026 Medicare Advantage Certification Product Training

Thank you for your interest in marketing Imperial Health Plan products to your clients. This training is specific to Imperial's 2026 Products in California.

Separately, by passing the 2026 AHIP or NABIP course, you fulfill all of the other CMS required agent annual training on Medicare Part C, Part D, Fraud, Waste & Abuse & Compliance.

Enrollment Materials

English (Threshold language)

Spanish (Threshold language)

Korean (Additional language offered)

Chinese (Additional language offered)

Vietnamese (Additional language offered)

Online Enrollment



CONNECTURE

Products

- **MAPD, C-SNP, MA-only**
- **Same copays statewide**
- **All Commissionable**

Serving 50 Counties



SERVICE AREA

Imperial Dynamic Plan (HMO)
 Imperial Senior Value (HMO C-SNP)
 Imperial Courage Plan (HMO)

Counties:

- | | | | |
|-----------------|---------------------|-----------------|--------------|
| 1. Alameda | 24. Nevada | 38. Santa Clara | |
| 2. Amador | 25. Orange | 39. Santa Cruz | 45. Tehama |
| 3. Butte | 26. Placer | 40. Shasta | 46. Tulare |
| 4. Contra Costa | 27. Plumas | 41. Siskiyou | 47. Tuolumne |
| 5. Del Norte | 28. Riverside | 42. Solano | 48. Ventura |
| 6. El Dorado | 29. Sacramento | 43. Sonoma | 49. Yolo |
| 7. Fresno | 30. San Benito | 44. Stanislaus | 50. Yuba |
| 8. Glenn | 31. San Bernardino | | |
| 9. Humboldt | 32. San Diego | | |
| 10. Imperial | 33. San Francisco | | |
| 11. Inyo | 34. San Joaquin | | |
| 12. Kern | 35. San Luis Obispo | | |
| 13. Kings | 36. San Mateo | | |
| 14. Los Angeles | 37. Santa Barbara | | |
| 15. Madera | | | |
| 16. Marin | | | |
| 17. Mariposa | | | |
| 18. Mendocino | | | |
| 19. Merced | | | |
| 20. Modoc | | | |
| 21. Mono | | | |
| 22. Monterey | | | |
| 23. Napa | | | |





IMPERIAL
HEALTH PLAN
OF CALIFORNIA

Dynamic Plan & Senior Value C-SNP

Part D Deductible

\$0

Monthly Premium

\$0

Part B Premium Reduction Each Month

\$35 **Dynamic**

\$25 **C-SNP**

MOOP

\$296

Inpatient Hospital & Inpatient Psych \$0

**MRI, CT-Scan
Lab & X-Ray
\$0**

Home Health

\$0

Urgent Care

\$0

PCP & Specialist

\$0

Routine Podiatry

6 Visits

\$0

Physical Therapy

\$0

Mental Health Doctor Visit \$0

Emergency Room

\$0 - \$125

Waived if admitted to hospital in 48 hrs

Ambulance

Ground - \$150

Air - 20%

Both waived if admitted to hospital in 48 hours

Durable Medical Equip & Part B Drugs

20%

Outpatient Hospital & Surgery Center

\$100

Transportation
100 One-Way Trips
\$0

In-Home Support

60 Hours

\$0

Home Delivered Meals

Up to 7

\$0

Diabetic Supplies & Insulin Pump \$0

Formulary Insulins

\$0

\$0 Insulins

Toujeo

Lantus

Fiasp

Soliqua

Fiasp

Novolog

Novolin

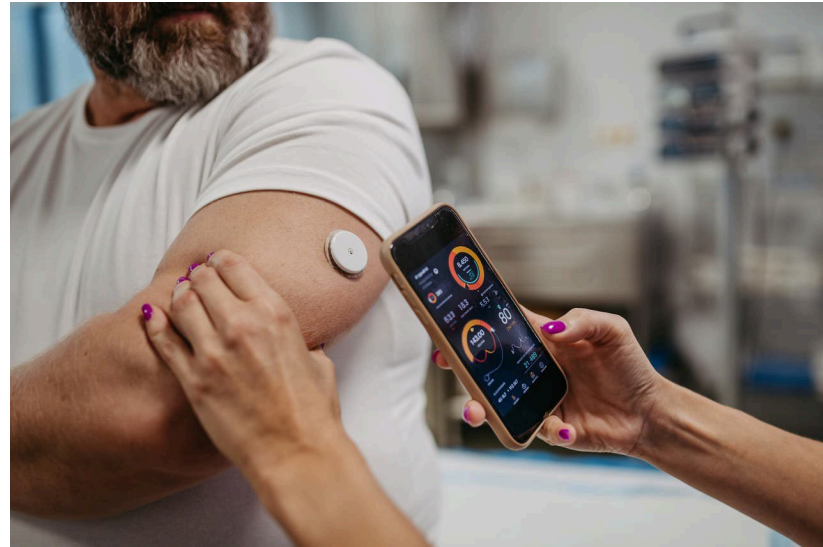
Humulin

Insulin Lispro

Continuous Glucose Monitor

Freestyle Libre & Dexcom Brands

\$0



Tier 3 Antidiabetics

Ozempic

Mounjaro

Jardiance

Januvia

Synjardy

Xigduo

Trulicity

Tradjenta

Rybelsus

Glyxambi

Janumet

Jentadueto

Trijardy

Farxiga

Part D Drugs 30-Day

Part D Initial Coverage	Dynamic	C-SNP
Tier 1 Preferred Generic	\$0	\$0
Tier 2 Generic	\$6	\$6
Tier 3 Preferred Brand	\$45	\$45
Tier 4 Non-Preferred Brand	\$90	\$90
Tier 5 Specialty	33%	33%
Tier 6 Select Care for C-SNP Only	N/A	\$3

Part D Drugs 100-Day Mail

Part D Initial Coverage	Dynamic	C-SNP
Tier 1 Preferred Generic	\$0	\$0
Tier 2 Generic	\$5	\$5
Tier 3 Preferred Brand	\$90	\$90
Tier 4 Non-Preferred Brand	\$180	\$180
Tier 5 Specialty	N/A	N/A
Tier 6 Select Care for C-SNP Only	N/A	\$0

Example: Average Monthly Cost Share for 100- Day Mail Order

Part D Initial Coverage	Dynamic	C-SNP
Tier 1 Preferred Generic	\$0	\$0
Tier 2 Generic	\$1.66	\$1.66
Tier 3 Preferred Brand	\$30	\$30
Tier 4 Non-Preferred Brand	\$60	\$60
Tier 5 Specialty	N/A	N/A
Tier 6 Select Care for C-SNP Only	N/A	\$0

Generic Viagra (sildenafil)

30-Day Supply

Tier 1 - \$0

6 Pills



After reaching \$2,100

Catastrophic Stage

Part D Drugs - \$0

Acupuncture & Chiro

35 Visits
Combined



Food / Grocery

Dynamic \$45/Qtr

C-SNP \$20/Qtr

**Must Qualify with a
Chronic condition**



OTC

\$140 QTR

\$130 QTR

Dynamic

C-SNP



Herbal Supplements

New to OTC



New OTC Locations

Costco

Northgate

CVS

Walmart

Dollar General

Ralphs

Walgreens

Andronico's

Vons

Vallarta

Food 4 Less

Pak N Save

Pavilions

Albertsons

Comprehensive Dental

\$4,000 max Dynamic

\$3,000 max C-SNP



Preventive Dental

\$500 max Dynamic

\$500 max C-SNP



Not Covered

- **Dental Implants**
- **Orthodontics**
- **Teeth Whitener**

Eye Network



Eyewear Lens

Included
\$0



Eyewear Frames Allowance

\$500



Hearing Aids

\$500



Worldwide Emergency

\$100,000



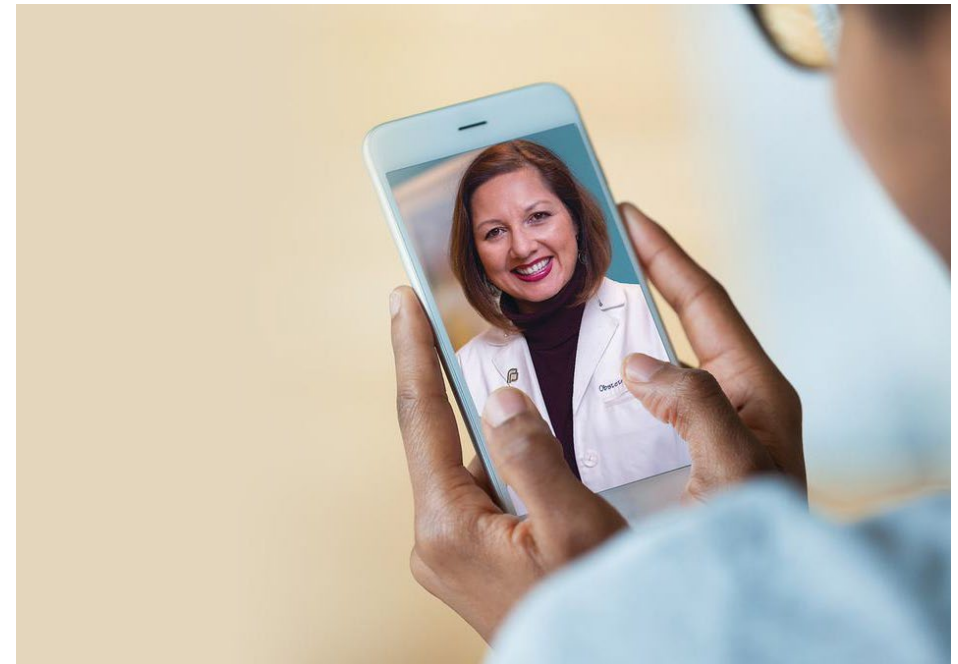
Fitness

\$0



Telehealth

\$0



Senior Value C-SNP Qualifier

- **Diabetes, or**
- **Chronic Heart Failure, or**
- **Cardiovascular Disorder**

C-SNP High Cholesterol Qualifier

Hyperlipidemia:

LDL > 100, or

Total Cholesterol > 200

New Provider Groups

Regal Medical Group – Los Angeles County

Lakeside Medical Group – Glendale / San Fernando Valley

Desert Oasis Healthcare – Palm Springs / Joshua Tree

Affiliated Doctors of Orange County

Bakersfield Family Medical Center – Kern County

High Desert Medical Group – Antelope Valley

Heritage Sierra Medical Group – Antelope Valley

Heritage Victor Valley Medical Group - Victorville

Coastal Communities Physician Network – San Luis Obispo

New Provider Groups

Primary Care Associates – LA/OC/RIV/SB/SD/VENT
Center IPA – LA/Orange/Santa Clara
KOVA – Fresno/Tulare/Kings/Madera/Kern
Angeles IPA – Los Angeles
Blue Zones Health – LA/RIV/SB/SD/OC
Korean American Medical Group – LA/Orange
Access Medical – LA County

New Provider Groups

Santa Clara County IPA – Santa Clara County

Providence Medical Group – Napa County

Tahoe Forest Health – Nevada County

Live Well IPA – San Bernardino & Riverside

Advent Health – Riverside County

Horizon Valley Med Group – San Diego County

New Provider Groups

Choice Medical Group – San Bernardino County

Amada Health – Fresno/Madera/Tulare/Kings

All United – San Bernardino & Riverside

First Valley Med Group – LA & Kern County

Coachella Med – Riverside County

MD Senior Care Med Group – San Bernardino

New Provider Groups

Premier Health – Orange and LA County

Imperial County Physicians Med Group - Imperial

Primary Health Care Medical Group – Imperial

Ideal IPA – San Diego

Innova – Orange and Riverside County



IMPERIAL
HEALTH PLAN
OF CALIFORNIA

Courage Plan MA-Only

Part D Drugs Not Covered

Monthly Premium

\$0

Part B Premium Reduction Each Month \$75 Courage Plan

MOOP

\$2,999

PCP Visit - \$0

Specialist Visit - \$5

Inpatient Hospital & Inpatient Psych

\$150 for Days 1 – 5

\$0 for Days 6 – 90

\$0 for Lifetime Reserve Days

Fitness

\$0



Worldwide Emergency

\$50,000



OTC \$75 QTR Courage



Eyewear Frames Allowance

\$250



Hearing Aids

\$500



Comprehensive Dental \$1,500 Courage Plan



Preventive Dental \$500 Courage Plan



Acupuncture

20 Visits
Annually



Transportation
100 One-Way Trips
\$0

Emergency Room

\$125

Waived if admitted to hospital in 48 hrs

Ambulance

Ground - \$150

Air - 20%

Not waived if admitted to hospital in 48 hours



IMPERIAL
HEALTH PLAN
OF CALIFORNIA

Continue to Certification Exam now.

Must score 85% or higher to pass.